

GREAT NECK
600 Northern Boulevard
Suite 113
Great Neck, NY 11021
(516) 478-0010 • Fax: (516) 482-0143

GREAT NECK
600 Northern Boulevard
Suite 118
Great Neck, NY 11021
(516) 478-0008 • Fax: (516) 478-0013

COMMACK
353 Veterans Memorial Hwy.
Suite 303
Commack, NY 11725
(631) 864-3900 • Fax: (631) 864-2954

PATCHOGUE
55 Medford Ave. / Route 112
Suite E
Patchogue, NY 11772
(631) 569-8325 • Fax: (631) 569-8333

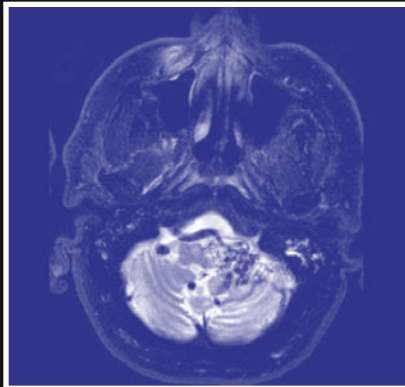
LAKE SUCCESS
1991 Marcus Avenue
Suite 108
Lake Success, NY 11042
(516) 442-2250 • Fax: (516) 442-2251

ROCKVILLE CENTRE
100 Merrick Road
Suite 128W
Rockville Centre, NY 11570
(516) 255-9031 • Fax: (516) 255-6010

PORT JEFFERSON STATION
1500-8A Route 112
Port Jefferson Station, NY 11776
(631) 828-3001 • Fax: (631) 828-3010

WEST ISLIP
500 Montauk Hwy.
Suite K
West Islip, NY 11795
(631) 983-8400 • Fax: (631) 983-8403

WWW.NSPC.COM



*Roundtable Discussion
of Current Cerebrovascular
Conditions, Stroke Diagnosis
and Treatments*

NEUROLOGICAL SURGERY, P.C.

Your Hosts for the Evening

JOHN PILE-SPELLMAN, M.D., F.A.C.R.

JONATHAN L. BRISMAN, M.D.



*This Program Is Intended To Be
A Roundtable Discussion of
Current Cerebrovascular Conditions,
Stroke Diagnosis and Treatments,
and an Exchange of Interesting Cases.*

(Powerpoint slides for discussion are welcome.)

Please enjoy a tour of the museum after the program.

*Visit www.vanderbiltmuseum.org
for exhibit information.*

NEUROLOGICAL SURGERY, P.C.

and

**JOHN PILE-SPELLMAN, M.D., F.A.C.R.
JONATHAN L. BRISMAN, M.D.**

*would like you to participate in
an educational dinner program*

**Tuesday, November 30th
at 6:00 pm**

Vanderbilt Museum and Planetarium

180 Little Neck Road
Centerport, New York 11721

RSVP - Richard Van Allen (631) 792-5814
rvanallen@nspc.com
or Hilda Mayer (347) 610-4829 / hmayer@nspc.com